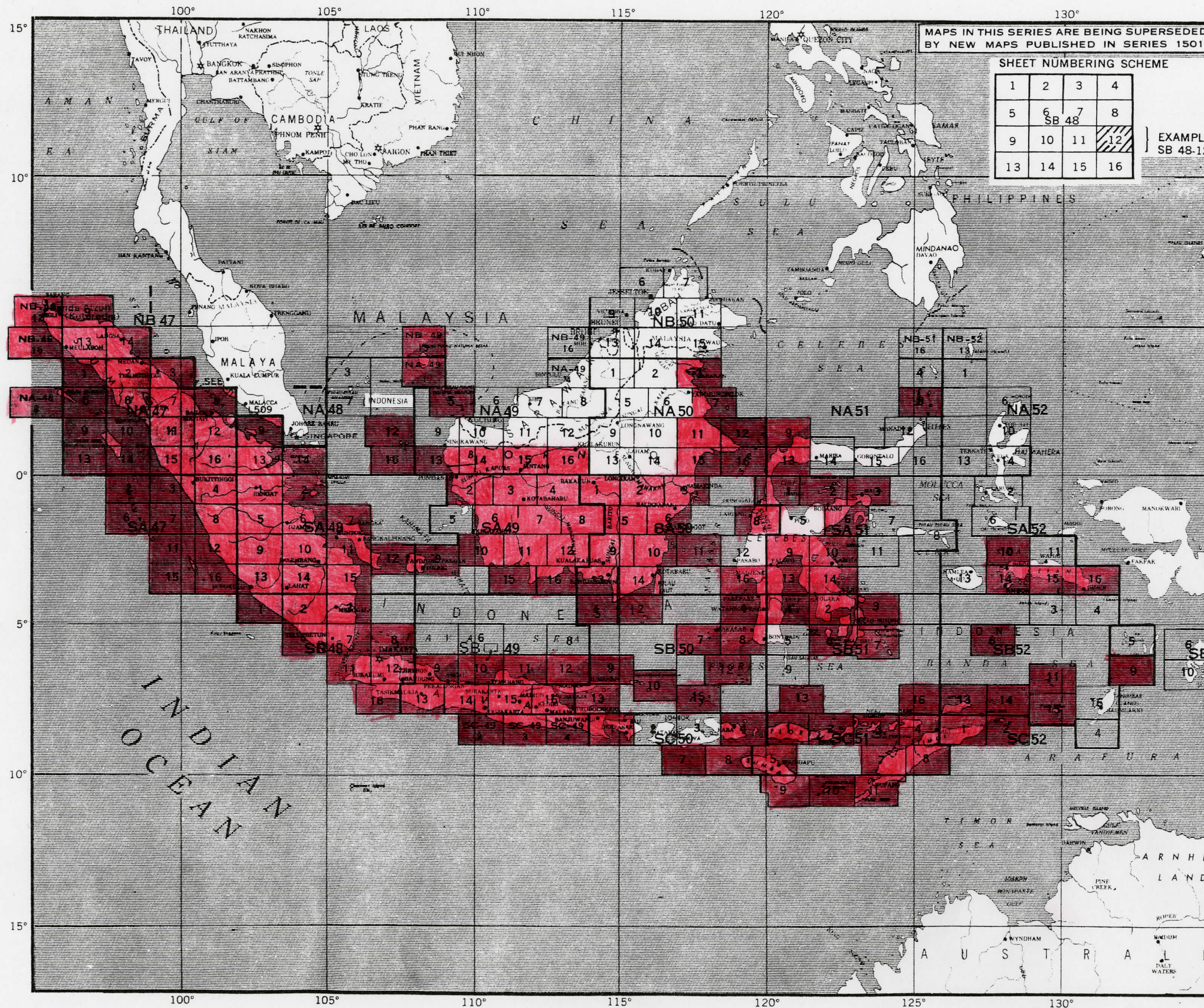


SERIES T503



MAPS IN THIS SERIES ARE BEING SUPERSEDED BY NEW MAPS PUBLISHED IN SERIES 1501.

SHEET NUMBERING SCHEME

1	2	3	4
5	6	7	8
9	10	11	12
13	14	15	16

EXAMPLE SB 48-12

INDEX TO MAPS OF EAST INDIES 1:250,000 LEGEND

- MAPS AVAILABLE
- MAPS AVAILABLE TO EXTENT OF EXISTING STOCK ONLY

ORDER BY STOCK NUMBER

Stock numbers for available maps are listed on reverse of this index.

THE STOCK NUMBER is a 15-character, alphanumeric identification, constituted as follows:

1. The series number (5 characters). When the series number is less than 5 characters, an X is entered as the 5th character.
2. The sheet number, or name (8 characters).
 - a. Roman numerals are converted to Arabic.
 - b. If map identification is by name instead of number, those letters beyond 8 are omitted.
 - c. If sheet number or name is less than 8 characters, an asterisk is entered in each unused space.
3. The edition number (2 characters). An edition number less than 10 is entered as the 15th character, preceded by a zero in the 14th space.

SERIES DESCRIPTION

TYPE: Topographic; colored.
 FORMAT: 1° N-S x 1°30' E-W; Transverse Mercator Projection 10 000 meter British grid.
 SYMBOLS: AMS
 SOURCE: Prepared by AMS from various sources.
 CHARACTERISTICS: International and primary administrative boundaries delineated; relief indicated by contours generally of 100 meter intervals, with supplementary contours at 50 meters; spot height in meters; populated places symbolized and classified according to importance; roads classified by surface, width and weatherability; railroads classified by gauge and number of tracks; vegetation symbolized; fore-shore and offshore detail; reliability and location diagrams; glossary.

DELINEATION OF INTERNATIONAL BOUNDARIES MUST NOT BE CONSIDERED AUTHORITATIVE

68070
s250
.45