

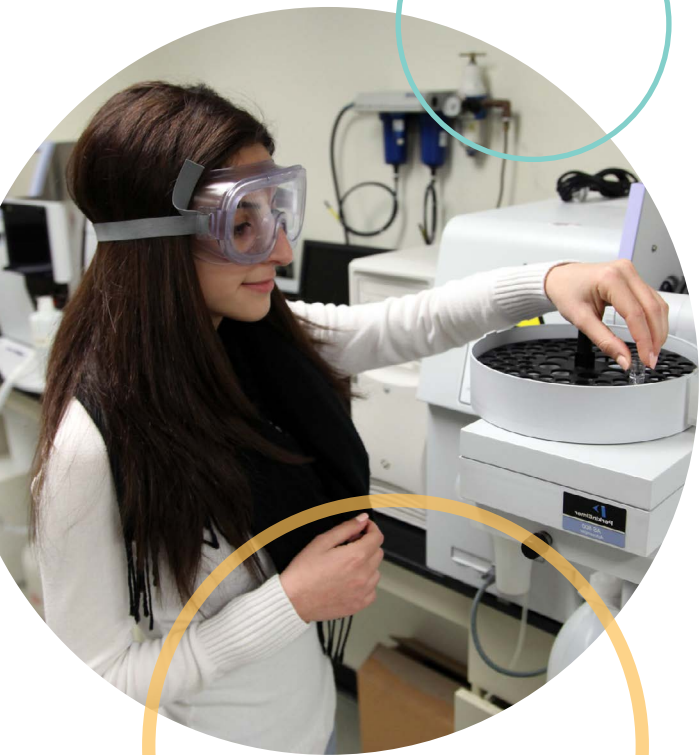
The Bonita J. Campbell Endowment For

WISE

WOMEN IN SCIENCE AND ENGINEERING

CSUN | UNIVERSITY LIBRARY





about **WISE**

Putting words into action, Professor Emerita Bonita J. Campbell established an endowment that actively advocates for the participation of women in STEM (science, technology, engineering, and mathematics). The Bonita J. Campbell Endowment for Women in Science and Engineering (WISE), emphasizes promoting and encouraging women to participate in insufficiently represented industries. The Campbell WISE endowment also aims to preserve the evolving contributions of women in the science and engineering disciplines.

The Library gratefully acknowledges the

critical support in



Developing the Library's collections in Science and Engineering and women's contributions in these fields



Establishing the Women in Science and Engineering (WISE) study room in UL 222



Hosting events that celebrate and promote women's achievements in science and engineering fields



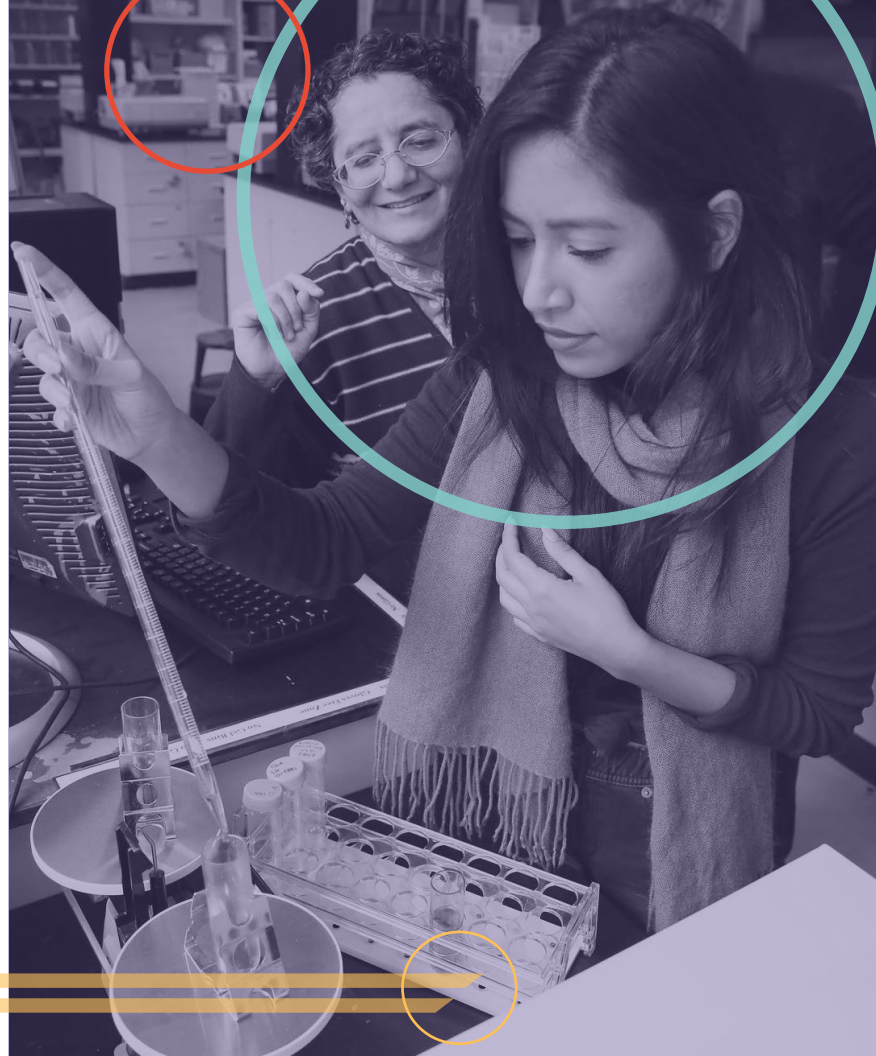
Establishing the Bonita J. Campbell WISE Scholarship Endowment

mission

To encourage women to build careers in the fields of science and engineering; to advance in their careers; to preserve the story of women who have pioneered in the science and engineering disciplines; and to inform leaders and educators about the contribution that women make in these important fields.

board members

WISE is an advisory group that guides future and present women seeking careers of engineering, math, and science. STEM field professionals meet monthly to strategize how best to advance the development of the WISE mission. Contact Joyclyn Dunham at jdunham@csun.edu or (818) 677-2638 if you are interested in joining the Board.



who is

Dr. Bonita J. Campbell?

Dr. Bonita J. Campbell became the first woman in engineering at CSUN to hold a tenured faculty position and to serve as a department chair. She left an exceptional legacy for California State University, Northridge, and the College of Engineering and Computer Science. She initiated her 33-year CSUN career by finding and building robust programs that brought national recognition to the College and quintupled the percentage of women students enrolled in its programs.

While serving as the Founding Department Chair of the Department of Manufacturing Systems Engineering and Management, she established five degree programs, gained the first program accreditation, and funded several endowments at CSUN, including the WISE Endowment and the Bonita J. Campbell Scholarship Endowment. Dr. Campbell's greatest joy has been working with students to achieve their educational and professional goals.



WISE library collection

The Bonita J. Campbell WISE Collection contains over 250 educational resources – both electronic and hard copies – for both research and instruction. These varied materials highlight the work and important contributions of women in the life sciences, physical sciences, health sciences, environmental sciences, engineering, mathematics and computer science.

how to get involved

For more information about, or to donate to:

Bonita J. Campbell Endowment for Women in Science and Engineering
or the **Bonita J. Campbell WISE Student Scholarship Endowment**

Please contact Tarry Kang at

tarry.kang@csun.edu or
(818) 677-5146

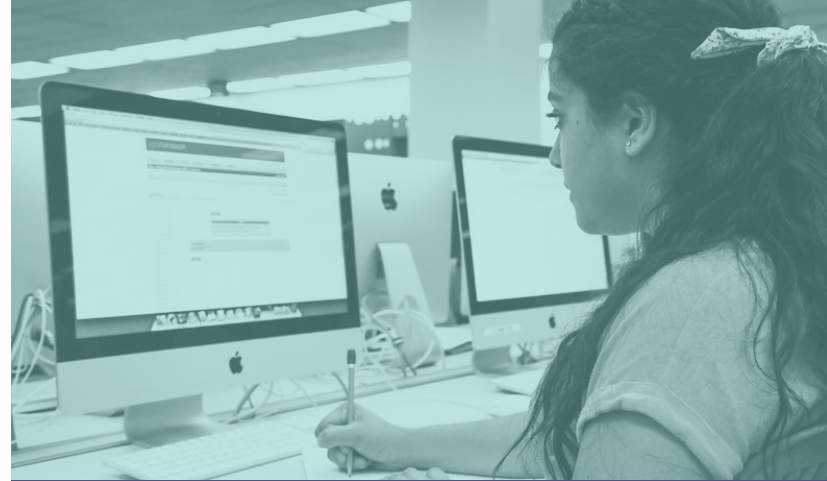


"Inspire the future, Nurture the present, Celebrate the past"

programs and events

WISE programs and events are designed to encourage and promote women within the STEM community. Our networking mixers and educational events throughout the year serve as an opportunity to:

- collaborate with organizations across campus to showcase and celebrate women in the science and engineering fields
- provide research opportunities for CSUN faculty and visiting scholars
- deliver service opportunities for CSUN students
- preserve and grow the local history or chronology about CSUN women in science and engineering through interviews and data collection
- introduce prospective contributors to WISE and its mission
- build a pipeline of future women in STEM through K-12 partnerships



membership and event information



For more information about
The WISE Board membership or notifications of
upcoming events, please contact:

Joyclyn Dunham
jdunham@csun.edu
(818) 677-2638

DESIGNED BY:
INTERSECTLA
THE CENTER FOR
CREATIVE COLLABORATION AT CSUN
www.intersect.la

CSUN | UNIVERSITY
LIBRARY

18111 Nordhoff Street
Northridge, CA 91330 8326